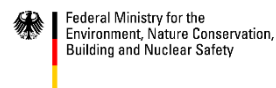




Supported by:



based on a decision of the German Bundestag

**TITLE:** Baseline study for the selection of pilot areas in the Upper Parana Atlantic Forest.

**WRITTEN BY:** School of Agrarian Sciences, National University of Asuncion.

**PUBLICATION DATE:** July 2014.

**KEYWORDS:** forests, Atlantic Forest, ParLu, Paraguay Land Use, Paraguay, deforestation, carbon stocks, and forest cover changes.

**OBJECTIVES:**

- Establish baseline geographical maps as policy instruments to support the monitoring and effective enforcement of the major forestry and environmental laws in Paraguay.
- Provide a reliable and solid estimates of forest carbon of the Atlantic Forest to report their emissions reduction potential in a confidently manner to support REDD+ related climate change mitigation policies.

**MAIN RESULTS:**

- Forest coverage maps of the Atlantic Forest in Paraguay for the year 2012 (Figure 1).
- Maps of Land Use Change (deforestation) between 2000 - 2005 and 2005 – 2011 (Figures 2 and 3).
- Forest carbon stock map for the Atlantic Forest in Paraguay for the year 2011 (Figure 4).

**ADDITIONAL RESULTS:**

(1) Matrix of Land Use Change (in hectares) based on the geographical mapping analysis.

Land use Category	Area (ha)
Forests in 2000	2,483,501
Forests in 2005	1,998,070
<b>Land use change Forest to No Forest 2000 - 2005</b>	<b>485,431</b>
Forests in 2005	1,998,070
Forests in 2011	1,709,545
<b>Land use change Forest to No Forest 2005 - 2011</b>	<b>288,525</b>
<b>Total forest lost 2000-2011</b>	<b>773,955</b>

- (2) Estimation of Atlantic Forest canopy cover using ground-truth measurement techniques.
- (3) Workshop on forest carbon for Forestry students of the National University of Asuncion.

**IMPACT:**

WWF has provided the baseline carbon and deforestation maps that have been incorporated into the National Reference Emissions Levels for REDD+. The REDD Readiness phase for Paraguay finalized in September of 2016. The working group submitted the “National Reference Emissions Level for the Forest Sector – NREF” at the Conference of Parties (COP) 21 for Climate Change in Paris, France. The methodology used by WWF-Paraguay and the School of Agrarian Sciences at the National University of Asuncion is also being incorporated at the national level.

**MAPS:**

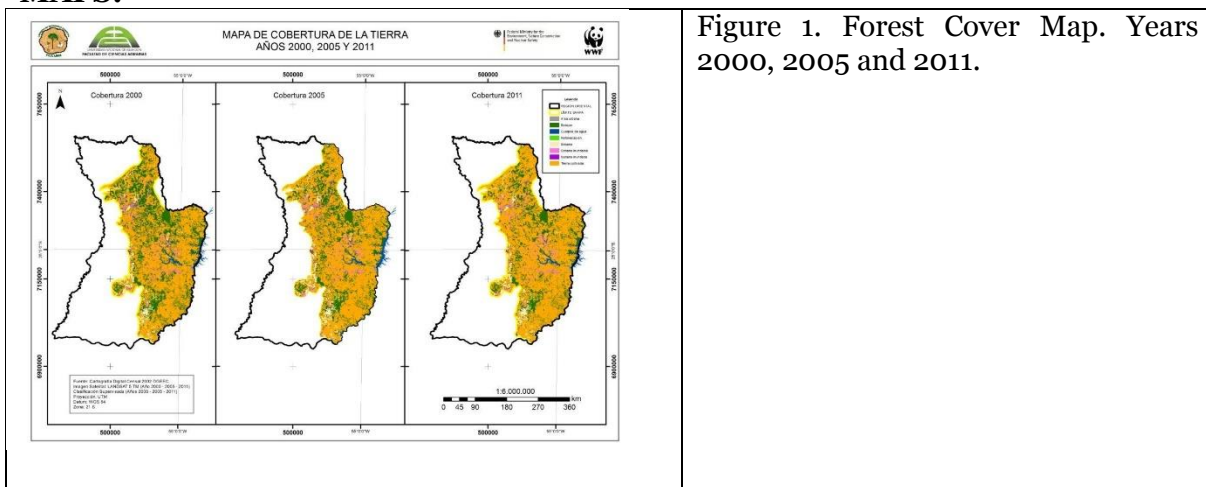


Figure 1. Forest Cover Map. Years 2000, 2005 and 2011.

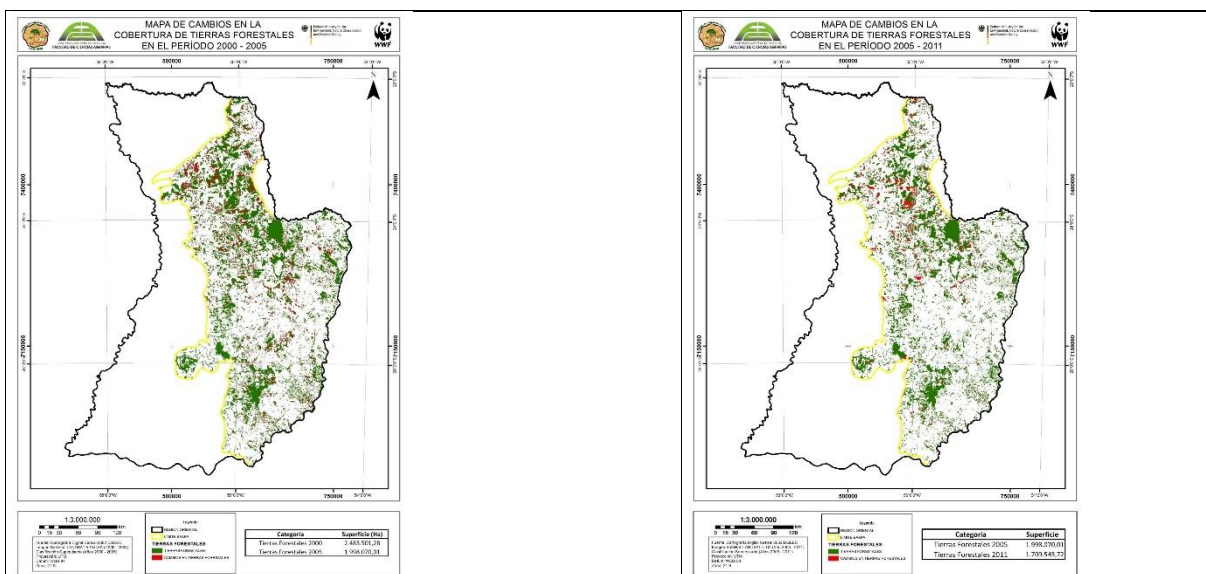


Figure 2. Forest cover changes between 2000 and 2005

Figure 3. Forest cover changes between 2005 and 2011

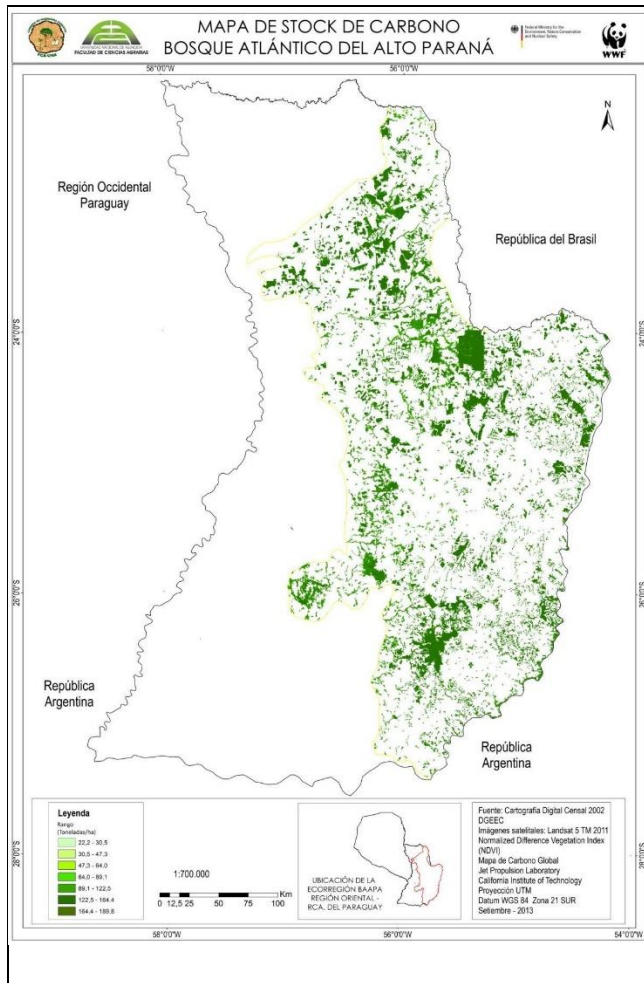


Figure 4. Carbon Stock Map of the Atlantic Forest.

**MORE INFORMATION:**

Full report available at:

[http://www.parlu.org/fileadmin/user\\_upload/Carrera\\_Ingenieria\\_Forestal\\_UNA -  
Desarrollo del estudio de linea de base para el sitio piloto Bosque Atlantico Al  
to Parana 2014 .pdf](http://www.parlu.org/fileadmin/user_upload/Carrera_Ingenieria_Forestal_UNA_-_Desarrollo_del_estudio_de_linea_de_base_para_el_sitio_piloto_Bosque_Atlantico_Alto_Parana_2014.pdf)